

17

$$f'(x) = 2x + 5$$

$$g'(x) = -10x + 14$$

$$\text{S tt } f'(x) = g'(x)$$

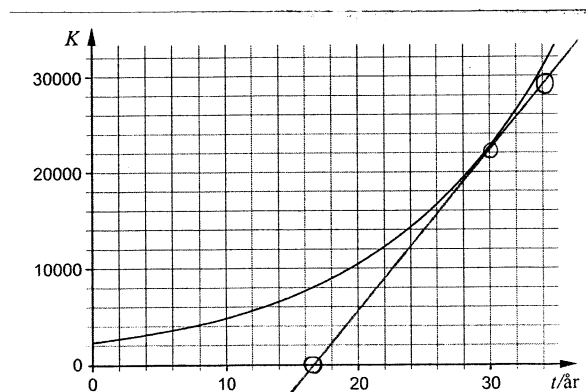
$$2x + 5 = -10x + 14$$

$$12x = 9$$

$$x = \frac{9}{12} = \frac{3}{4}$$

$$\underline{\underline{\text{Svar: } x = \frac{3}{4} \quad (x = 0,75)}}$$

18



Rita in en tangent

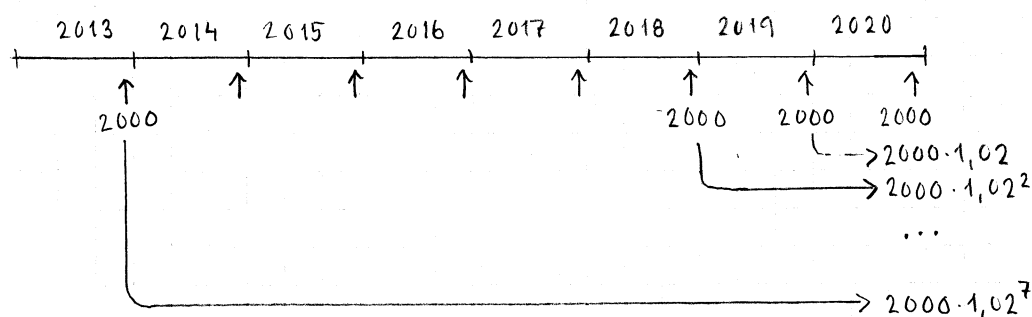
Tangentens lutning

$$\begin{aligned} 29000 - 0 \\ 34 - 17 \\ = 1700 \end{aligned}$$

(a) Svar: $K'(30) \approx 1700$

(b) Svar: Exakt 20  r efter starten 1977  kar antalet g ss med ^{hastigheten} 800 g ss per  r.

19



S kta v rdet: $2000 + 2000 \cdot 1,02^1 + \dots + 2000 \cdot 1,02^7 = s_8$

Delta  r en geometrisk summa med $a_1 = 2000$, $k = 1,02$, $n = 8$.

$$s_8 = \frac{2000(1,02^8 - 1)}{1,02 - 1} = 17166$$

Svar: 17166 kr