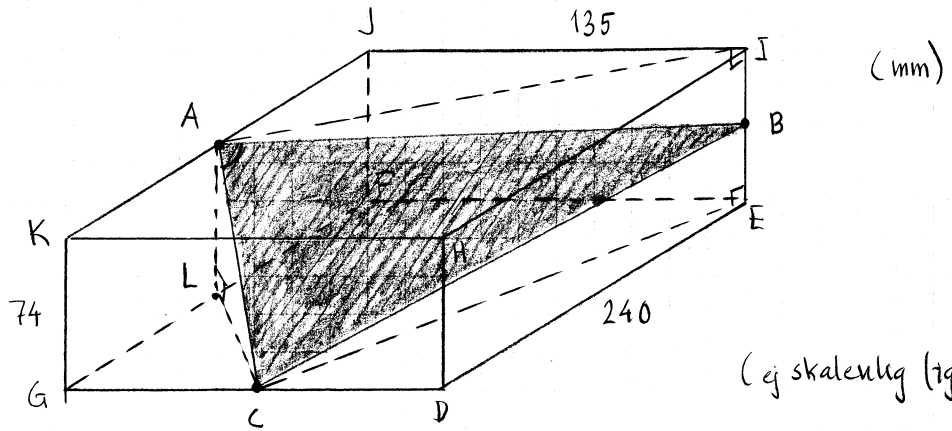
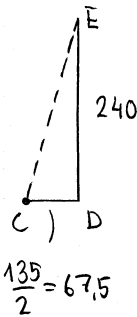


4256



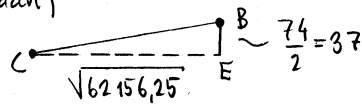
(Fianran)



$$CE^2 = 67,5^2 + 240^2$$

$$CE = \sqrt{62156,25} \approx 249,3$$

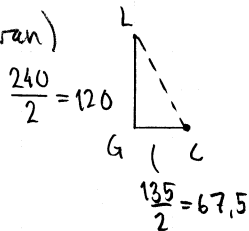
(Fiansidan)



$$BC^2 = 37^2 + (\sqrt{62156,25})^2$$

$$BC = \sqrt{63525,25} \approx 252,0$$

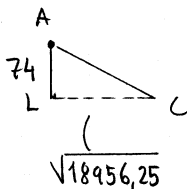
(Fianran)



$$CL^2 = 120^2 + 67,5^2$$

$$CL = \sqrt{18956,25} \approx 137,7$$

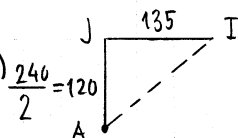
(Fiansidan)



$$AC^2 = 74^2 + (\sqrt{18956,25})^2$$

$$AC = \sqrt{24432,25} \approx 156,3$$

(Fianran)

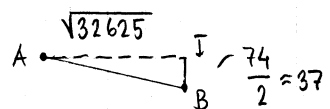


$$AI^2 = 120^2 + 135^2$$

$$AI = \sqrt{32625} \approx 180,6$$

4256

(forts)



$$AB^2 = 37^2 + (\sqrt{32625})^2$$

$$AB = \sqrt{33994} \approx 184,4$$

Cosinussatsen i trekant ABC ger nu

$$BC^2 = AC^2 + AB^2 - 2 \cdot AB \cdot AC \cdot \cos A$$

$$63525,25 = 24432,25 + 33994 - 2 \sqrt{33994} \cdot \sqrt{24432,25} \cdot \cos C$$

$$\cos C = \frac{5099}{-2 \sqrt{33994} \sqrt{24432,25}} \Rightarrow C \approx 95,1^\circ$$

Svar:  $95,1^\circ$