

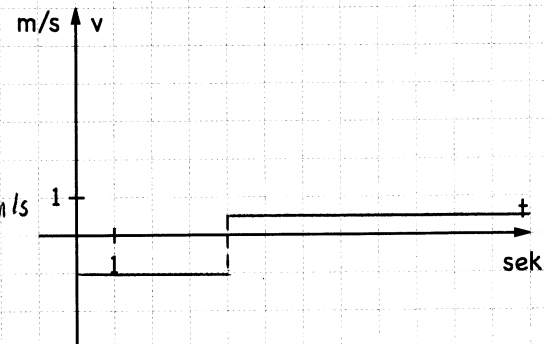
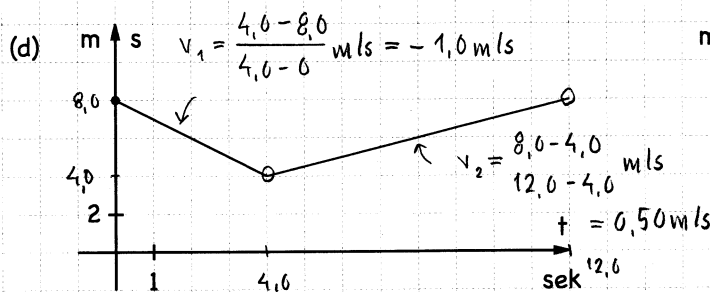
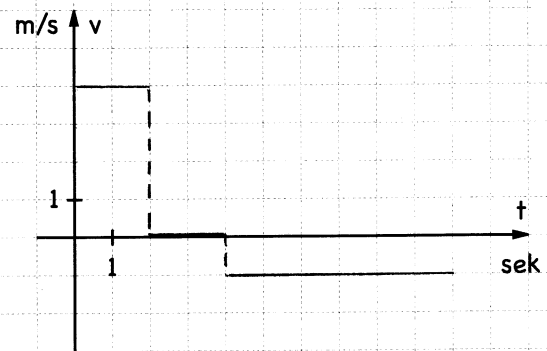
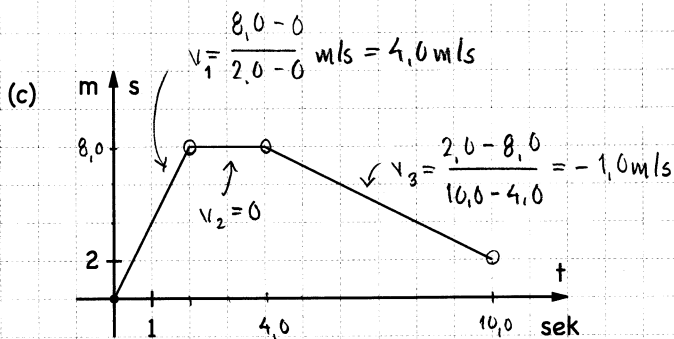
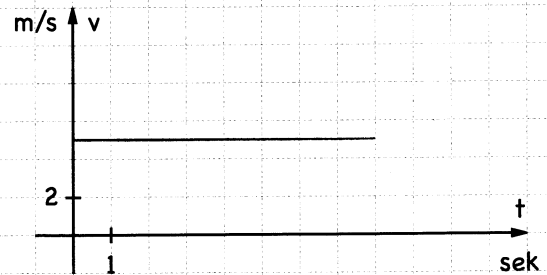
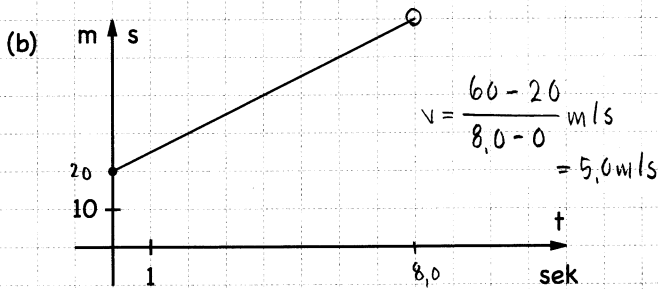
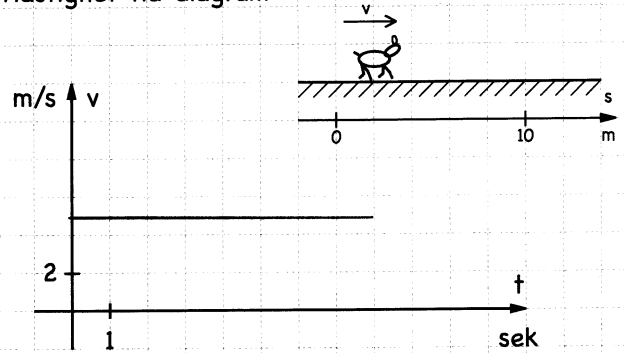
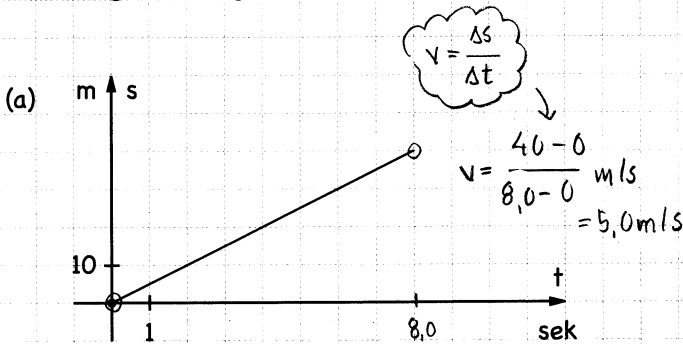
# s-t- och v-t-diagram

Namn: \_\_\_\_\_

Fyll i de tomma diagrammen nedan. Läge-tid- och hastighet-tid-diagrammen på varje rad beskriver samma rörelse. I de tomma s-t-diagrammen är läget vid  $t = 0$  markerat.

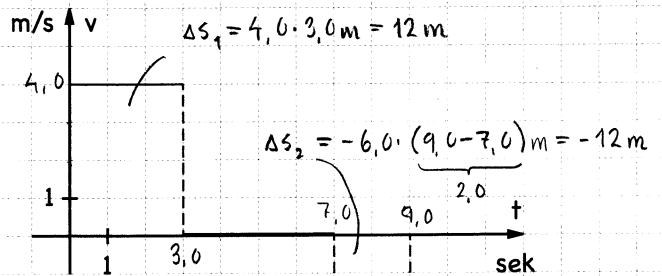
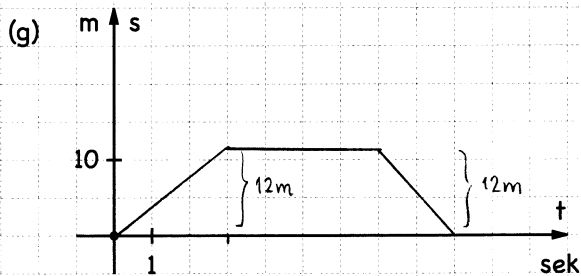
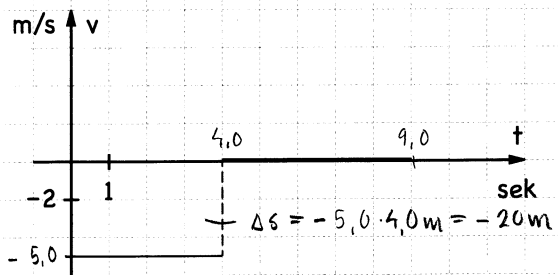
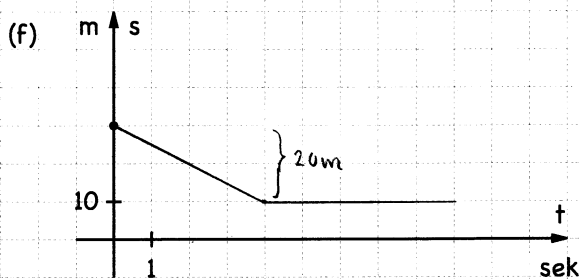
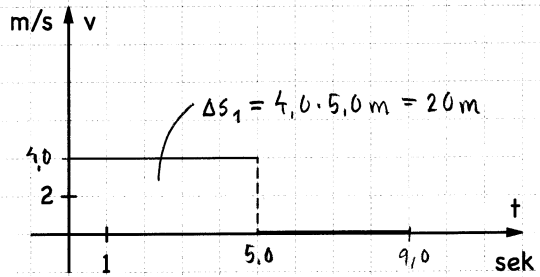
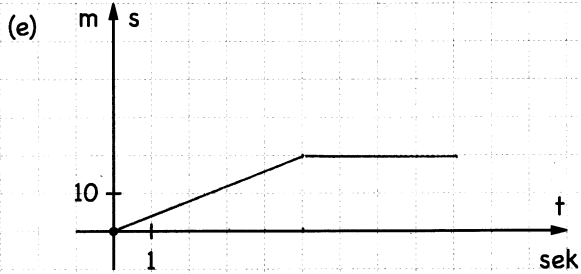
Läge-tid-diagram (lutningen = hastigheten)

Hastighet-tid-diagram (arean = förflyttningen)



Läge-tid-diagram (lutningen = hastigheten)

Hastighet-tid-diagram (arean = förflyttningen)



Obs! Area under t-axeln innebär en negativ förflyttning

