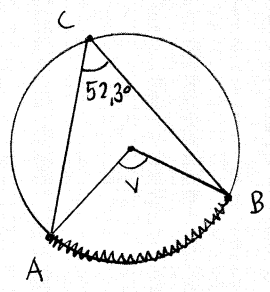


16



Randvinkelsatsen ger

$$v = 2 \cdot 52,3^\circ = 104,6^\circ$$

Svar:  $v = 104,6^\circ$

17

$$\sqrt{2,11x - 5} = 8,6$$

Geogebra ger  $x \approx 37,4$

NLös( $\sqrt{2.11x-5}=8.6$ )

Svar:  $x \approx 37,4$

18

Vi väljer punkten där  $x=0$ . Punktens  $y$ -koordinat:

$$f(0) = 3 \cdot 0^2 + 5 \cdot 0 + 7 = 7$$

Svar: Till exempel  $(0, 7)$

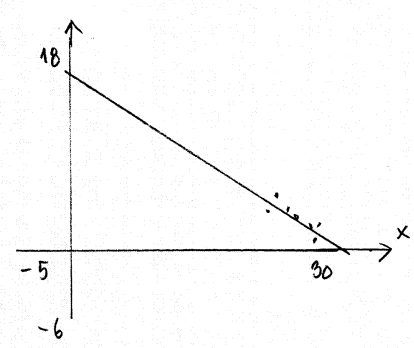
19

Linjär regression med Geogebra ger  $y = -0,5107x + 16,4536$

Skiv in data

22	4.2
23	5.6
...	...

"Lista med punkter" (L1)  
 "RegressionLin (L2)"



Svar:  $a \approx -0,51$ ;  $b \approx 16,45$