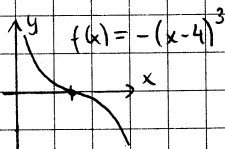
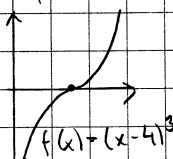


$$\begin{aligned} f'(a) &= 0 \\ f''(a) &= 0 \end{aligned}$$

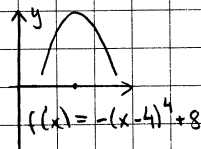
Terrass:



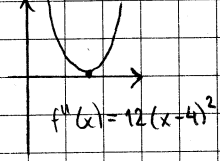
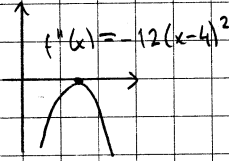
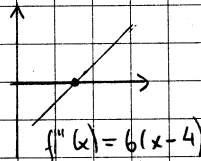
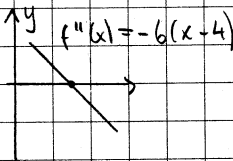
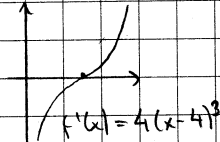
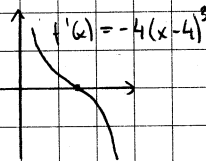
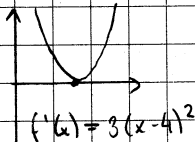
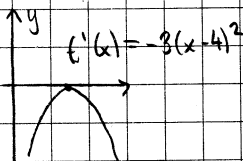
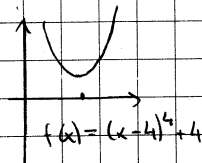
Terrass:



Max:

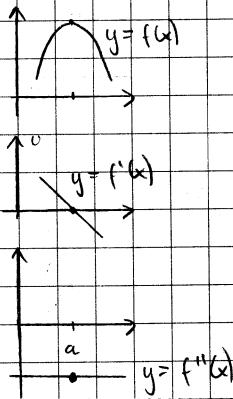


Min:



$$\begin{aligned} f'(a) &= 0 \\ f''(a) &< 0 \end{aligned}$$

Alltid max:



$$\begin{aligned} f'(a) &= 0 \\ f''(a) &> 0 \end{aligned}$$

Alltid min:

